

## **Schedule 1**

### **ILUA Area**

The ILUA Area is all of the land and waters described in Parts A, B and C below and depicted in the map in Part D below but does not include the exclusions described below.

#### **Part A – Part of Heathlands Regional Park (Part of Lot 3 on JD8):**

That part of Lot 3 on JD8 north of Latitude 11.592880° South.

#### **Part B – Part of Jardine River National Park (Part of Lot 26 on NPW404):**

That part of Lot 26 on NPW404 north of Latitude 11.592880° South.

#### **Part C – Jardine River Regional Park (Lot 1 on SO806056):**

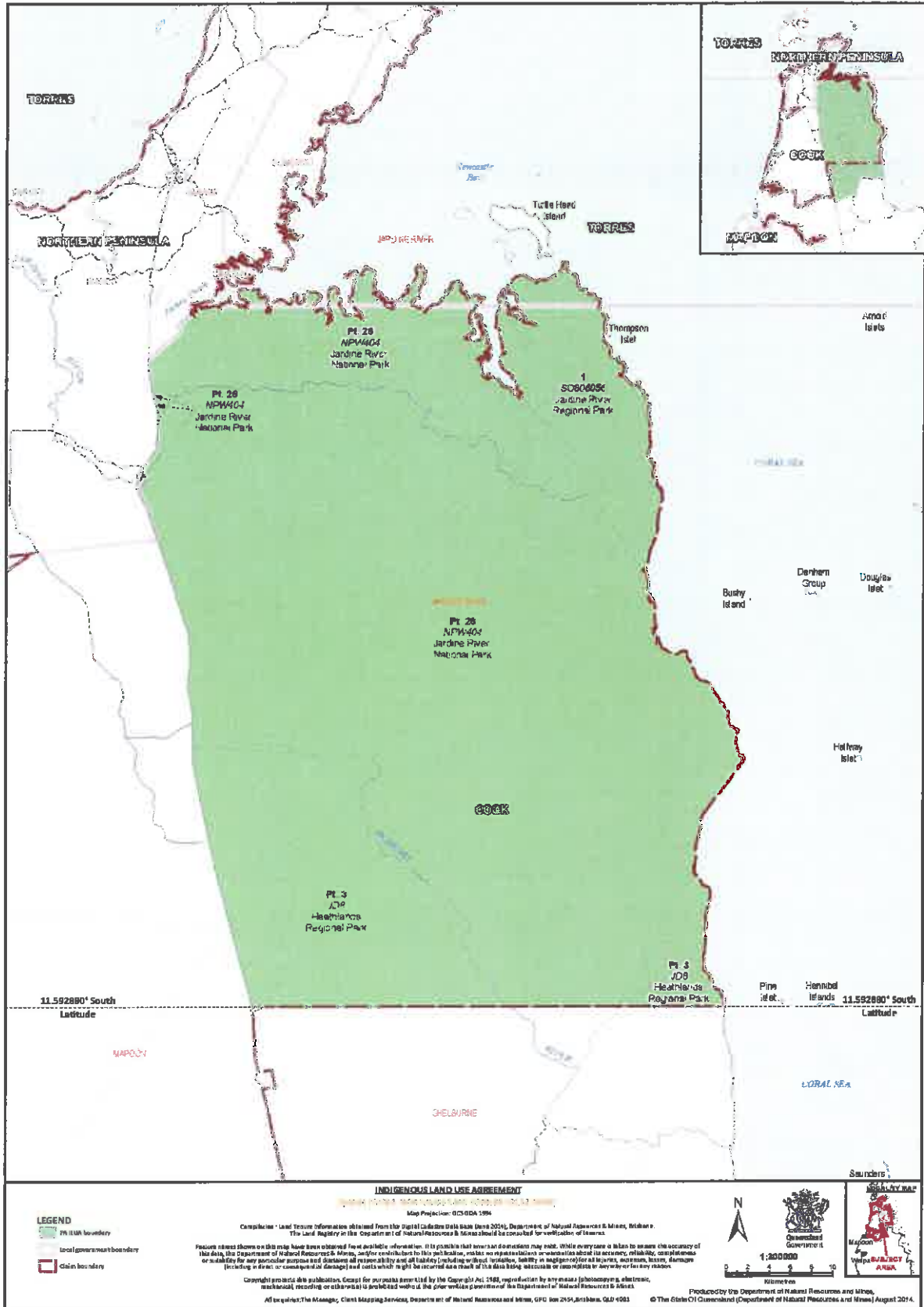
The whole of Lot 1 on SO806056.

#### **Exclusions**

The ILUA Area does not include:

- Trochus Island and an unnamed island between the Middle River and the Escape River that forms part of Lot 26 on NPW404 north of Latitude 11.592880° South; and
- the land and waters within the QUD269/2008 Gudang Yadhaykenu People (QC2008/008) native title determination application *as registered 3<sup>rd</sup> March 2009*.

Part D – Map of the ILUA Area



Document Path: \\slipstream\CLAIM\AFQ\01\_02Northern Cape York #1\ILUA\_Request\_June\_2014\WQ\01\_02\_NorthernCapeYork\_1\_PA\_ILUA.mxd